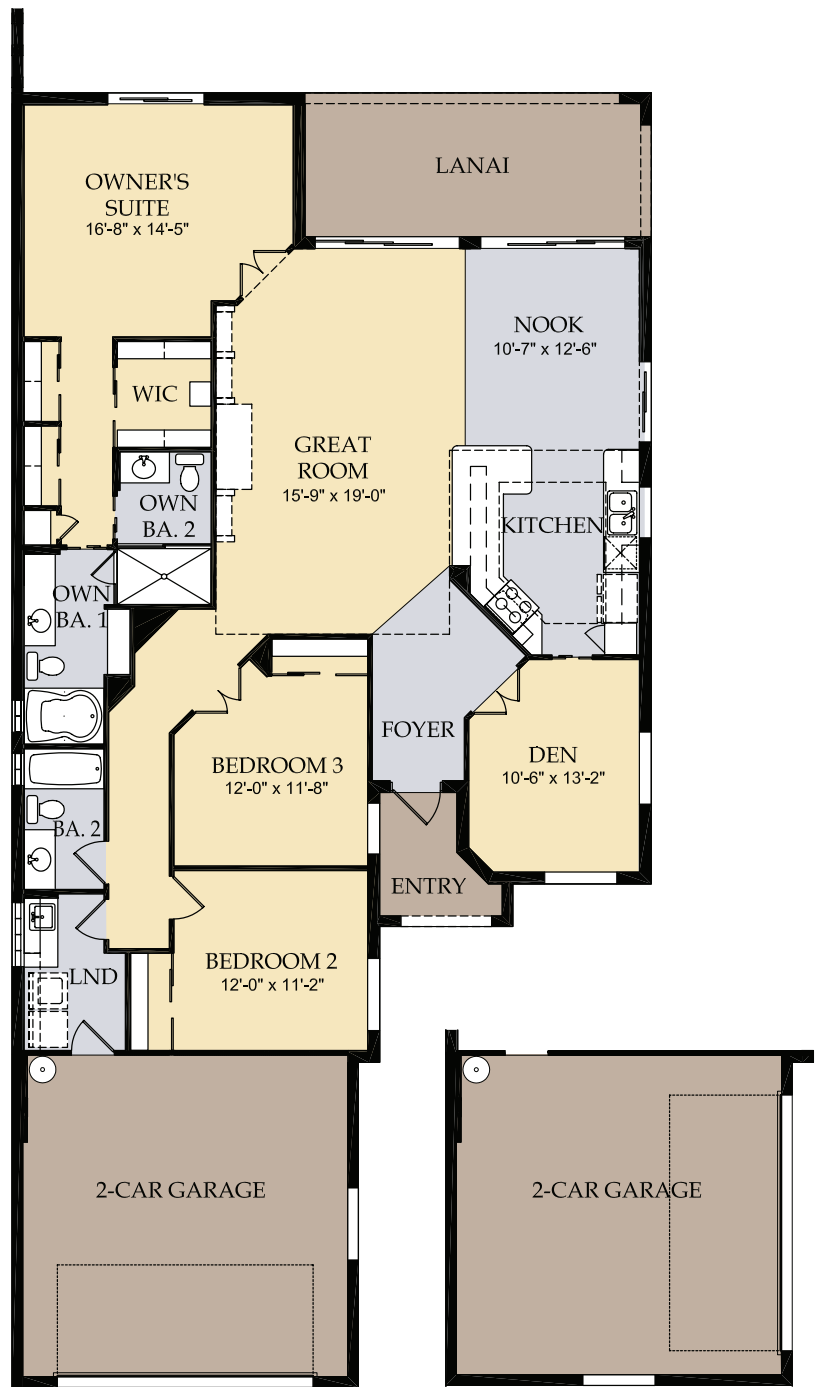


Oakmont

Luxury Single-Family Home

3 Bedrooms, Den,

2 Baths, 2-Car Garage



Side Load Garage Option

Oakmont Square Footage

Residence Area	2,003 sq. ft.
Garage Area	450 sq. ft.
Entry Porch	52 sq. ft.
Lanai	195 sq. ft.
Total	2,700 sq. ft.

Artist's renderings are conceptual only. Exact dimensions and spatial arrangements on this plan are approximate and may vary in final construction.

Quality Features - Oakmont

Custom Interior Features

- Tile floors in foyer, kitchen, breakfast nook, baths and laundry
- Smooth finish walls in kitchen and baths
- Decorative baseboard trim
- Upgraded raised-panel interior doors
- Solid surface window sills
- Walk-in owner's closet
- Rounded wall corners, per plan
- Decorative chrome door hardware

Exterior Features

- Tile roof
- Designer exterior finish
- Ventilated aluminum soffits
- High-grade Sherwin-Williams® latex paint
- Decorative brick paver driveway
- Large, private screened lanai
- Seamless gutter system
- Galvanized steel storm shutters

Kitchen Features

- Wood kitchen cabinets with Corian® countertops
- GE® refrigerator/freezer with lighted door dispenser for ice and water
- GE® built-in microwave
- GE® multiple-cycle dishwasher
- GE® clean design electric range with self-cleaning oven
- White Corian® kitchen sink with electric garbage disposal
- Moen® faucet with pullout sprayer

Bathroom Features

- Owner's shower with enclosure
- Wood bath cabinets
- Cultured marble vanity tops
- Tiled shower walls
- Decorative Moen® faucets

Architectural Features

- Steel-reinforced concrete block construction
- Engineered roof trusses with hurricane straps

Energy Savings and Electrical Features

- Ceiling fan prewires, per plan
- Decora rocker switches
- Cable TV and telephone outlets, per plan
- Structured media center for low voltage wiring
- Smoke detectors
- R-30 ceiling insulation
- Automatic garage door opener with remote controls
- Insulated fiberglass entry door
- Exterior lighting
- Wired security system with alarm and keypad
- Exterior waterproof electrical outlets
- Lennox® central heating and air conditioning system with programmable thermostat
- Double-pane insulated screened windows
- Energy-efficient water heater
- GE® full-size washer and dryer

Special Features

- One-stop-shop financing through Pulte Mortgage offering a complete array of conventional financing programs at competitive rates
- Pulte Protection Plan™ – An insured warranty and customer care department that makes "peace of mind" a reality and home ownership a pleasure.



All photos and descriptions herein represent an artist's conception and are not intended to be an exact representation or show specific detailing. Due to normal construction tolerances, square footage may vary. Included features subject to change without notice. These dwelling units provide accessibility features for persons with disabilities as required by the Federal Fair Housing Act. ©Copyright 2008 Pulte Homes, Inc.

