

# Estate Series - Morningside Lane

## Single Family Home

3 Bedrooms, 3.5 Baths,  
Den, Extended 2-Car Garage



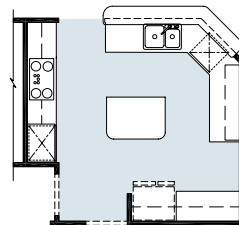
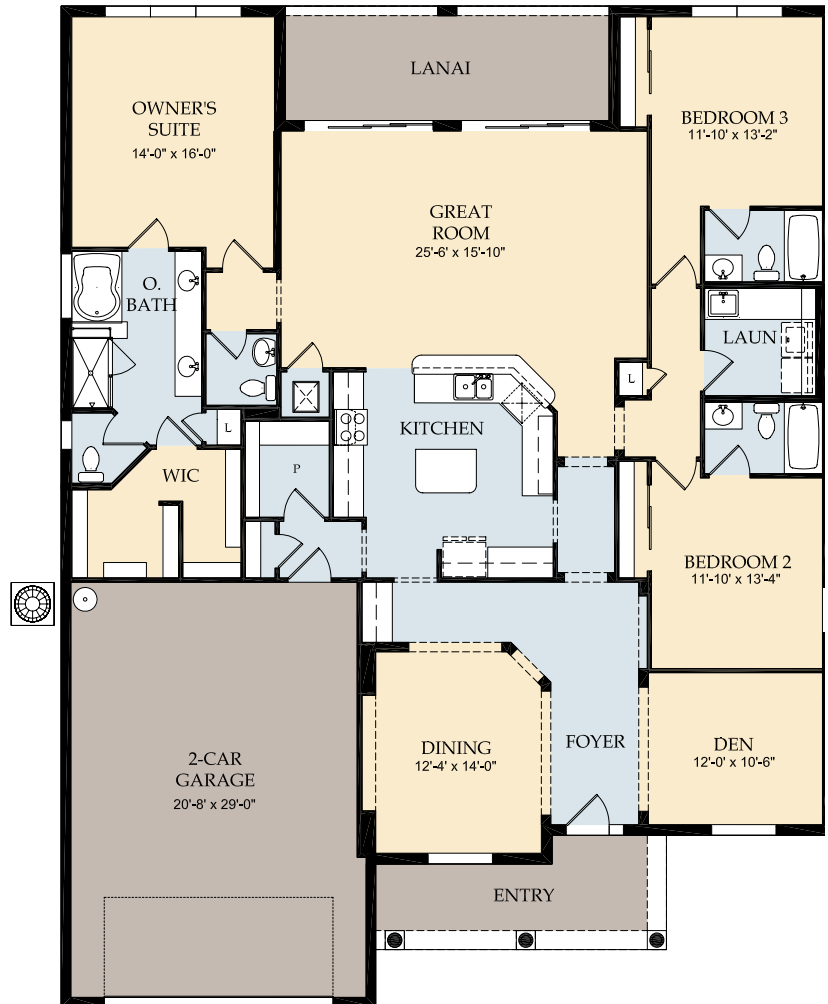
A



B



C



Kitchen Option

### Elevation A & B

Living Area 2,611 Sq. Ft.  
Total Area 3,499 Sq. Ft.

### Elevation C

Living Area 2,611 Sq. Ft.  
Total Area 3,561 Sq. Ft.

Artist's renderings are conceptual only. Exact dimensions and spatial arrangements on this plan are approximate and may vary in final construction.



# Quality Features – Estate Series

## Custom Interior Features

- Tile floors in foyer, kitchen, breakfast nook, baths, and laundry
- Decorative baseboard trim
- Upgraded raised-panel interior doors
- Solid surface window sills
- Walk-in owner's closet
- Decorative chrome door hardware
- Crown molding in foyer and owner's bedroom, per plan

## Exterior Features

- Concrete tile roof
- Easy to maintain decorative stucco exterior
- Ventilated aluminum soffits
- High-grade Sherwin-Williams latex paint
- Decorative brick paver driveway
- Large, private screened lanai
- Seamless gutter system on sides of home
- Galvanized steel hurricane shutters
- Professionally landscaped home site with full sod coverage and automatic sprinkler system

## Kitchen Features

- Wood kitchen cabinets with 42" upper wall cabinets and crown molding
- Granite countertops
- GE® built-in microwave
- GE® multiple-cycle dishwasher
- GE® clean design electric range with self-cleaning oven
- Stainless Steel kitchen sink with electric garbage disposal
- Moen® faucet with pullout sprayer

## Bathroom Features

- Owner's shower with enclosure
- Wood bath cabinets
- Tiled shower walls in Owner's bath
- Fiberglass surround in secondary baths
- Cultured marble vanity tops
- Decorative Moen® faucets

## Quality Construction Features

- Steel-reinforced concrete block construction
- Professionally engineered roof trusses with hurricane tie-downs for wind protection

## Energy Savings and Electrical Features

- Ceiling fan prewires, per plan
- Decora rocker switches
- Cable TV and telephone outlets, per plan
- Structured media center for low voltage wiring
- Smoke detectors/carbon monoxide detectors
- R-30 ceiling insulation
- Automatic garage door opener with remote controls
- Insulated fiberglass entry door
- Compact fluorescent exterior lighting
- Wired security system with alarm and keypads
- Exterior waterproof electrical outlets
- Lennox® central heating and air conditioning system with programmable thermostat
- Double-pane, insulated, low E (high efficiency) screened windows
- Energy-efficient water heater

## Special Features

- One-stop-shop financing through Pulte Mortgage offering a complete array of conventional financing programs at competitive rates
- Pulte Protection Plan™ – An insured warranty department that makes "peace of mind" a reality and home ownership a pleasure.